

# Stealthbox®

## INSTALLATION GUIDE for the

### SB-GM-TAHOCNSL/10W1v3

SKU# 94278

2007 - 2013 Chevrolet / GMC Full-Size SUV's & Trucks

Suburban, Tahoe, Yukon/ XL, Yukon Denali/ XL Denali, Avalanche,  
Silverado, & Sierra/Denali



*Thank you for choosing a JL Audio Stealthbox® for your automotive sound system. With proper installation, your new vehicle-specific enclosed subwoofer system will deliver years of listening pleasure.*

*We strongly recommend that you have your new Stealthbox® installed by your authorized JL Audio dealer. The installation professionals employed by your dealer have the necessary tools and experience to disassemble and reassemble your vehicle properly.*

*Also, keep in mind that your warranty coverage extends to 1 year if your system is installed or approved by your authorized JL Audio dealer. If you prefer to perform your own installation, please read this installation guide completely before beginning the process.*

**JL AUDIO®**  
*Ahead of the Curve™*

#### ! IMPORTANT

If you choose to perform the installation yourself, it is absolutely vital that the Stealthbox® be properly mounted to the vehicle according to these instructions. Failure to mount the enclosure properly presents two problems:

- 1) The sub-bass performance will suffer due to the movement of the enclosure caused by the force exerted by the woofer(s).
- 2) A loose enclosure presents a serious safety hazard in the event of a collision or sudden deceleration.

#### INSTALLATION DIFFICULTY:

3 OUT OF 5

ESTIMATED TIME:  
2-3 HOURS



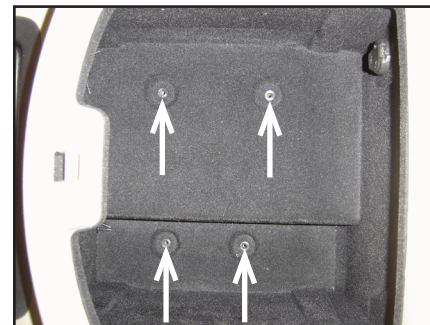
#### STEP 1

Using masking tape or similar, mark where the bottom edge of the front center console meets the carpet on the driver's side.



#### STEP 2

Using masking tape or similar, mark where the bottom edge of the front center console meets the carpet on the passenger's side.



#### STEP 3

Open the storage lid of the center console. Remove the four exposed screws.



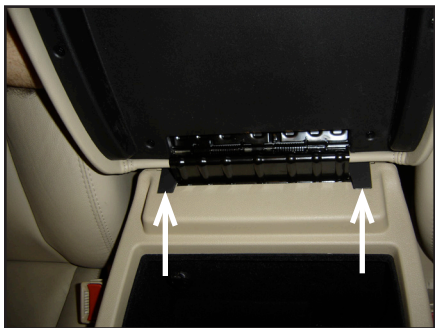
**STEP 4**  
Remove the cup holders from center console by pulling upwards.



**STEP 5**  
With the cup holders removed, look through the opening and disconnect the exposed wiring harness plug.



**STEP 6**  
Pull the wiring harness off the tab.



**STEP 7**  
**\*Read Step 7 & Step 8 before attempting the removal of the rear face plate.\***  
Carefully pry up and back on the two black tabs on either side of the console's door hinge.  
**Extra care should be used in an effort to prevent breaking these tabs.**



**STEP 8**  
Pry the rear face to the rear of the vehicle.



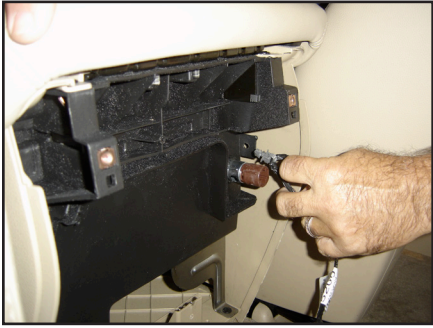
**STEP 9**  
Remove all plugs from the rear face plate.



**STEP 10**  
From the back side of the center console, fold down the cup holders.  
Remove two screws behind the cup holders as well as the three screws securing the cup holder to the center console.  
Remove the back panel from the center console.



**STEP 11**  
Remove the wiring harness that is secured to the driver's side of the center console.



**STEP 12**  
Remove the wiring harness that is secured to the passenger side of the center console.



**STEP 13**  
Remove the pair of screws that are found on each side of the center console.  
  
If the seat(s) are powered, bring the seat(s) to their highest height and all the back to access the front screws. Bring the seats all the way forward to access the rear screws.  
  
If the seat(s) are manual, bring the seat(s) all the way back and access the screws from under the seats, as in the picture.



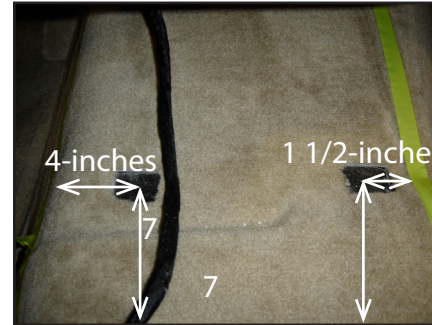
**STEP 14**  
Remove the center console from the vehicle.



**STEP 15A**  
With the center console out of the vehicle, cut off the tabs that protrude down from the cup holder area.



**STEP 15B**  
The opening with the tabs cut off.



**STEP 16**  
Cut out a pair of 2-inch x 2-inch squares, out of the carpet.  
Driver side to the center of the wax squares:  
4-inches from the driver's side tape line to the right.  
7 1/4-inches from the rear of the hump (that runs the width of the transmission hump) forward.  
  
Passenger side to the center of the wax squares:  
1 1/2-inches from the passenger's tape line to the left.  
7 1/4-inches from the rear of the hump (that runs the width of the transmission hump) forward.



**STEP 17**  
Place the supplied pair of wax squares onto the areas that were cut out in **STEP 16**.

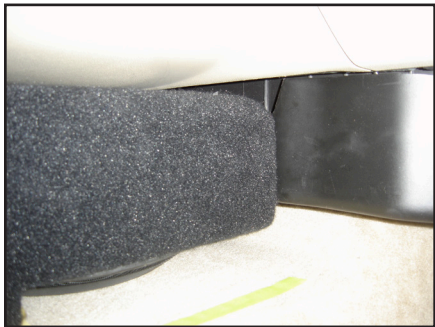


**STEP 18**  
Thread the supplied pair of socket cup set screws into the bottom of the Stealthbox®, leaving 3/4-inches exposed.



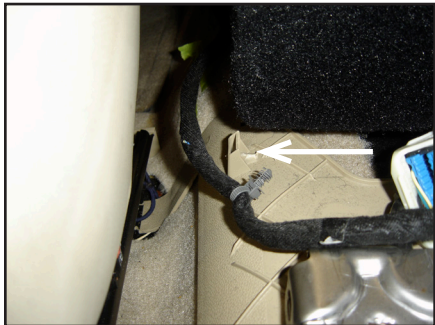
**STEP 19**

Position the Stealthbox® in the mounting location.



**STEP 20**

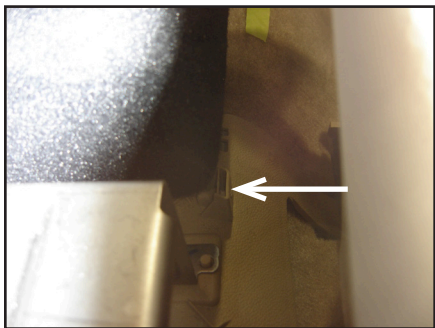
The front of the Stealthbox® fits against the black plastic panel located on the passenger side.



**STEP 21A**

The rear of the Stealthbox® is to be fitted between a pair of tabs that are protruding up from the flooring.

This is the driver's side tab.



**STEP 21B**

This is the passenger's side tab.



**STEP 22**

Once the Stealthbox® is in the mounting location, press down on it firmly.

Remove the Stealthbox® carefully, leaving the wax squares in place. The socket cup set screws will leave impressions in the wax.



**STEP 23**

**Note: Before drilling, make sure that you are not going to be drilling into any gas lines, brake lines, transmission lines, electrical wiring, transfer case (4x4 vehicles) or anything else that might cause a reduction in your weekly pay. Always wear eye protection when drilling!**

With a drill and a 1/2-inch drill bit, drill through the impression made in the wax square and into the vehicle's transmission tunnel.

Remove the wax squares and the tape.



**STEP 24**

Run speaker wire from the amplifier's location to the Stealthbox® location and check for proper operation of the woofer.

Back out the socket cup set screws installed in **Step 18**, to expose 1 1/4-inch.



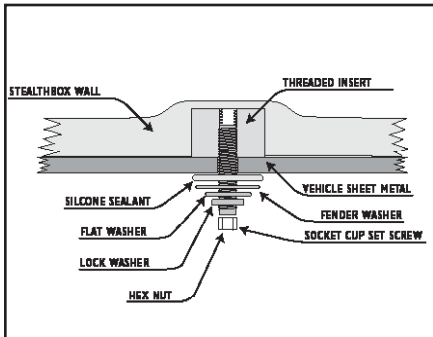
**STEP 25**

Place the Stealthbox® into position by guiding the socket cup set screws through the holes drilled in **Step 23**.



**STEP 26**

Place the wire harness to the left side of the Stealthbox®.



**STEP 27**

From under the vehicle, place the supplied fender washers, flat washers, lock washers and then hex nuts onto each protruding socket cup set screw and secure. Adjust the amount of exposed thread on each cup set screw if necessary.

**Note: For added protection, it is recommended that you apply a bead of silicone between the vehicle and the fender washer. After the bolt assembly is tightly secured, it is also recommended that vehicle under-coating material is applied to the exposed assembly.**



**STEP 28**

Attach the speaker wire to the terminal.

In reverse order from **Step 14** to **Step 1**, replace the factory components back together.



**CONGRATULATIONS**

You have completed the installation for this model!

Please refer to the Power Recommendation section for an amplifier recommendation and basic set-up help.

**INCLUDED HARDWARE**

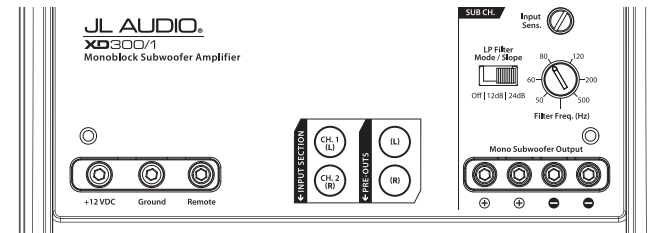
- (2) 3-inch x 3-inch Wax Squares
- (2) 3/8-inch x 1 1/4-inch Fender Washer
- (2) 3/8-inch Split Lock Washer
- (2) 3/8-16 x 2-1/4-inch Socket Cup Set Screw
- (2) 3/8-inch-16 Hex Nut

**SPECIFICATIONS**

**Enclosure Type:** Acoustic Suspension (sealed)  
**Driver Type:** 10W1v3-2  
**Nominal Impedance:** 2 ohms  
**Continuous Power Handling:** 300 Watts

**POWER RECOMMENDATION**

JL Audio recommends using a high quality amplifier such as the JL Audio XD300/1v2. The diagram below shows the recommended crossover settings for the XD300/1v2 when being used to power your Stealthbox®.



The JL Audio XD300/1v2 is a very versatile audio component. Please consult the owner's manual for even more detailed information about installing and tuning this amplifier.

**MID/HIGH FREQUENCY DRIVER FITMENT**

A variety of JL Audio coaxial and component systems will fit in the factory speaker locations of your vehicle.

**Front Speaker Size / Location:** 6.5-inch / Front Doors  
**Fits JL Audio Models:** TR650-CSi, TR650-CXi, C2-650x, C2-650, C5-650x, C5-650 & ZR650-CSi

**Rear Speaker Size / Location:** 6.5-inch / Rear Doors  
**Fits JL Audio Models:** TR650-CSi, TR650-CXi, C2-650x, C2-650, C5-650x, C5-650 & ZR650-CSi



**JL AUDIO®**  
*Ahead of the Curve™*

(954) 443-1100

www.jlaudio.com

All specifications are subject to change without notice. "JL Audio" and the JL Audio logo, "Stealthbox" and the Stealthbox logo are registered trademarks of JL Audio, Inc. "Ahead of the Curve" and its respective logo is a trademark of JL Audio, Inc.  
**JLA-SKU# 011210 - 09.20.2016** • Printed in USA • ©2016 JL Audio, Inc.  
 For more detailed information please visit us online at [www.jlaudio.com](http://www.jlaudio.com).

